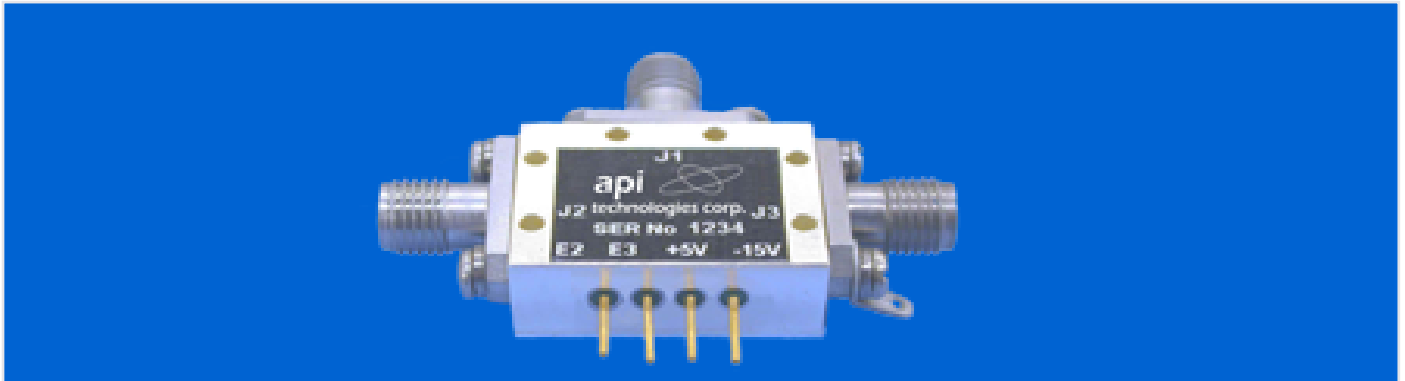


MASWML0010

SPDT Non-Reflective Miniature Switch TTL Compatible Driver, 0.5 - 18.0 GHz



- Broad-band frequency
- Miniature Outline
- Field removable connectors
- TTL Compatible
- Fast switching
- European Manufacture

Description

The MASWML0010 is a broadband PIN diode (0.5 – 18 GHz) SPDT Non-reflective miniature switch featuring Low Insertion loss and Fast switching.

The built-in, high-speed, TTL compatible driver, is driven by two independent control lines.

The field replaceable connectors allow direct integration into microstrip applications.

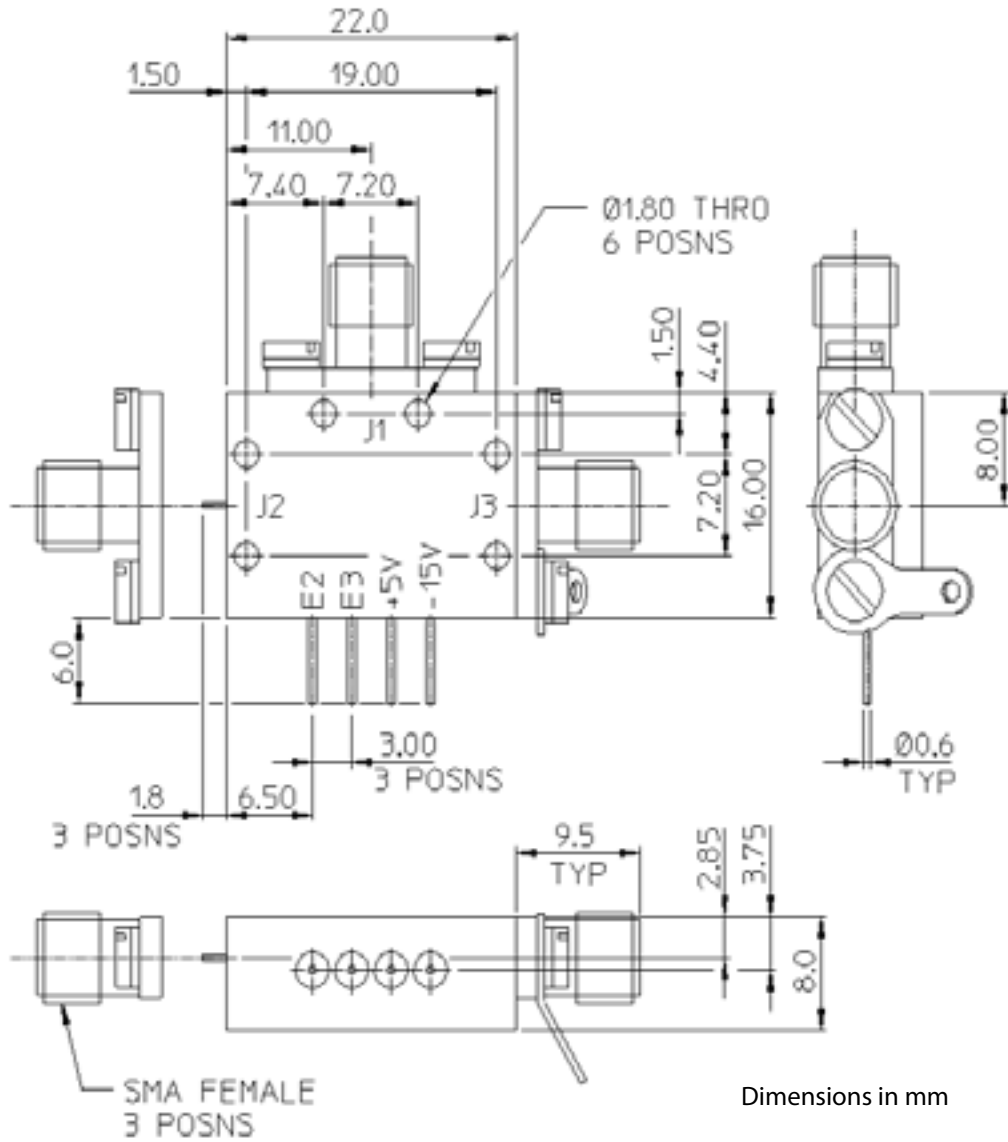
This proven harsh environment design is suitable for Airborne, Naval & Ground base applications.

Electrical Specification @ 25°C

Frequency:	0.5 to 18 GHz	
Insertion Loss:	3.3 dB Max.	
Isolation:	55 dB Min.	
Return Loss:	9.5 dB Min.	
Switching Speed	30 ns Max.	
Input Power:	100 mW Max.	
Logic::	Each Channel (TTL)	'0' = Insertion Loss '1' = Isolation
Power Supply:	+5 V @ 70 mA Max. -15V @ 50 mA Max.	
Operating Temperature:	-55 - +85 °C	
Storage Temperature:	-55 - +125°C	

(Applies over frequency range @ +25°C, output and input load impedance of 50Ω.
Unless otherwise stated limits and conditions are indicated values.)

Mechanical Outline



Input: SMA Female, Field replaceable

Outputs (2): SMA Female, Field replaceable

DC connections and TTL controls: solder pins.

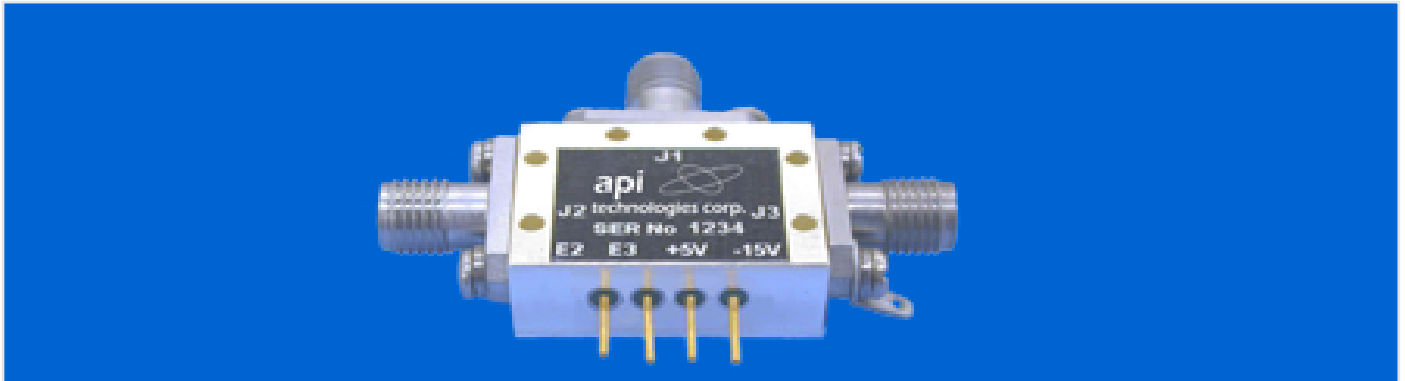
Finish: Silver Plate to Def-Stan 03-09

Whilst every effort is made to ensure the accuracy of the information contained in this brochure, no responsibility can be accepted for any errors and/or omissions.

Descriptions and specifications of products are subject to change without notice.

MASWML0012

SPDT Reflective Miniature Switch TTL Compatible Driver, 0.5 - 18.0 GHz



- Broad-band frequency
- Miniature Outline
- Field removable connectors
- TTL Compatible
- Fast switching
- European Manufacture

Description

The MASWML0012 is a broadband PIN diode (0.5 – 18 GHz) SPDT reflective miniature switch featuring Low Insertion loss and Fast switching.

The built-in, high-speed, TTL compatible driver, is driven by two independent control lines.

The field replaceable connectors allow direct integration into microstrip applications.

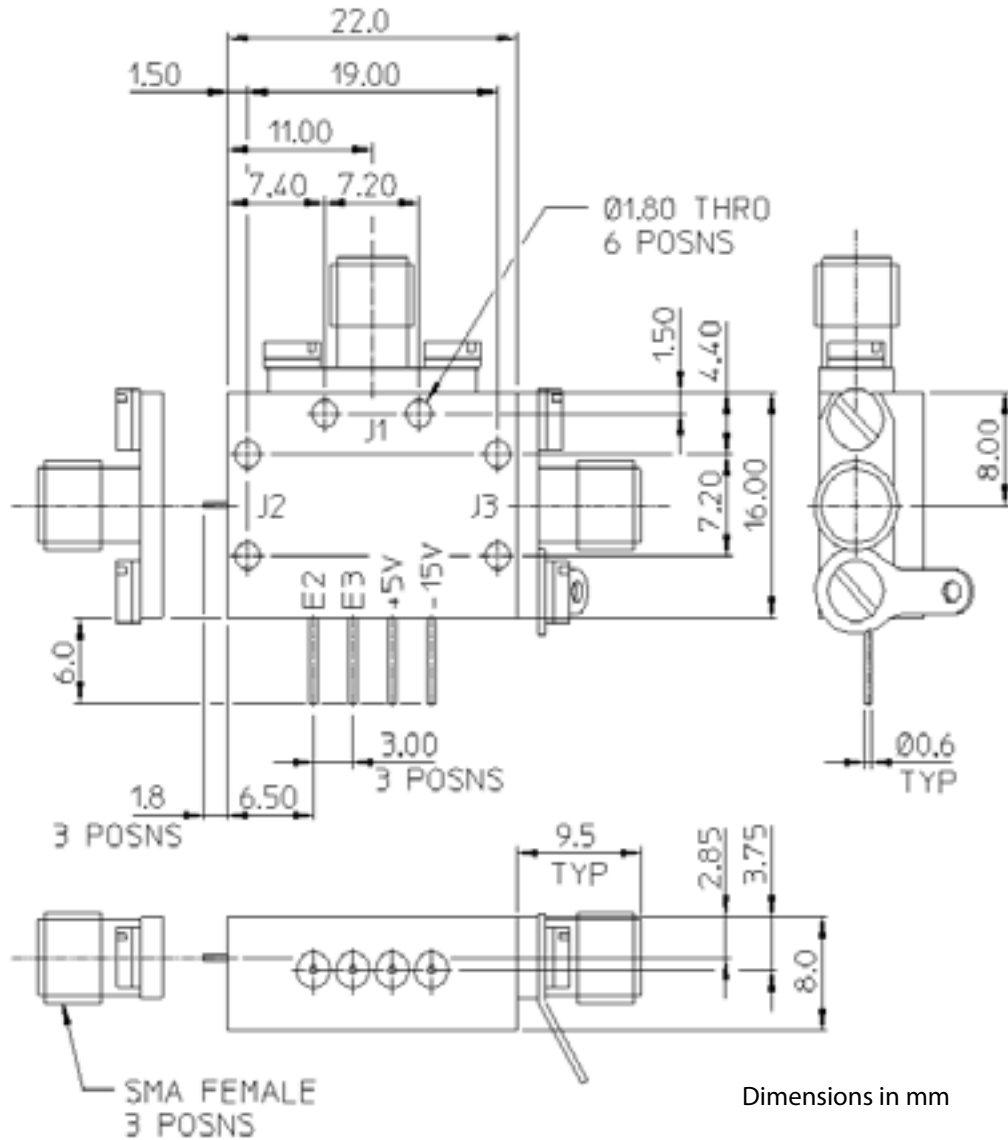
This proven harsh environment design is suitable for Airborne, Naval & Ground base applications.

Electrical Specification @ 25°C

Frequency:	0.5 to 18 GHz	
Insertion Loss:	2.6 dB Max.	
Isolation:	55 dB Min.	
Return Loss:	9.5 dB Min.	
Switching Speed	30 ns Max.	
Input Power:	100 mW Max.	
Logic::	Each Channel (TTL)	'0' = Insertion Loss '1' = Isolation
Power Supply:	+5 V @ 70 mA Max. -15V @ 50 mA Max.	
Operating Temperature:	-55 - +85 °C	
Storage Temperature:	-55 - +125°C	

(Applies over frequency range @ +25°C, output and input load impedance of 50Ω.
Unless otherwise stated limits and conditions are indicated values.)

Mechanical Outline



Input: SMA Female, Field replaceable

Outputs (2): SMA Female, Field replaceable

DC connections and TTL controls: solder pins.

Finish: Silver Plate to Def-Stan 03-09

Whilst every effort is made to ensure the accuracy of the information contained in this brochure, no responsibility can be accepted for any errors and/or omissions.

Descriptions and specifications of products are subject to change without notice.